

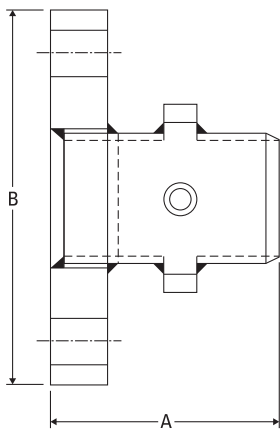


HVAC ACCESSORIES

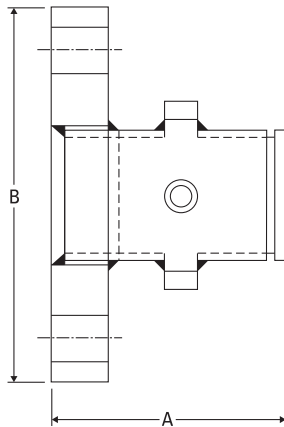
MINNESOTA FLEXIBLE CORPORATION

803 Transfer Road • St. Paul, MN 55114 • Phone 651.645.7522 • Fax 651.645.8259 • Toll Free 800.351.9069

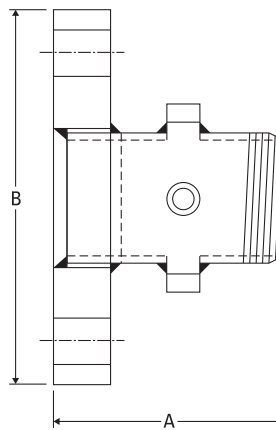
PROJECT	
CUSTOMER	
ENGINEER	
REPRESENTATIVE	
DRAWING #	



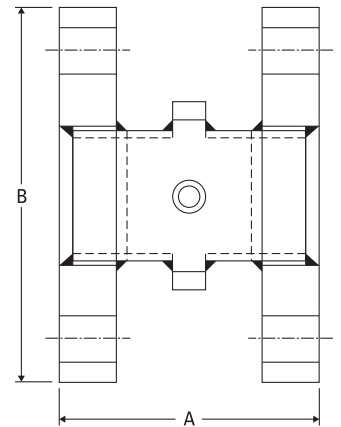
Style BW
Flange x Butt Weld



Style GR
Flange x Groove



Style MP
Flange x Male



Style PF
Flange x Flange

150# Flanged Spool Accessory

Part	Pipe Size	A	B
MFC-AA-250-XX-XXXX	2.50	6.00	7.00
MFC-AA-300-XX-XXXX	3.00	6.00	7.50
MFC-AA-400-XX-XXXX	4.00	6.00	9.00
MFC-AA-500-XX-XXXX	5.00	6.00	10.00
MFC-AA-600-XX-XXXX	6.00	6.00	11.00

XX KEY

Flange x Flange = **PF** Flange x Male = **MP**
 Flange x Groove = **GR** Flange x Butt Weld = **BW**

Optional Tappings

	XXX Key*	
	1st X = A	0 = No Tapping
	2nd X = B	1 = .25" Tapping
	3rd X = C	2 = .50" Tapping
	4th X = D	3 = .75" Tapping
*Last four digits (XXXX) for optional tappings & location. Must fill in last four digits.		
EXAMPLE: MFC-AA-250-PF-1000 = single .25" tapping at the A position		

CONSULT FACTORY FOR SPECIAL SIZES AND REDUCING SPOOLS

ADAPTER SPOOLS